

Butler Classic™ Building Systems

The Butler Difference is Speed



GET THE BEST... FAST.

Tier I - Basic buildings with Fast Delivery

Tier II - Expand Your Options



PROVEN BUILDING QUALITY WHEN YOU NEED IT

Since 1901, Butler Manufacturing™ has built a reputation as the leading producer of metal building systems that are weather-tight and look like new for years to come.

The Classic™ Building System is one of these systems. It offers a competitive price with a short lead time and with all the Butler® quality you expect.

Whether you need a building for storage, production processes, or even retail or commercial use, we can design a Butler Classic building to meet your needs.



Flexibility and Speed. What Do You Need?

The Classic Building System comes in two tiers depending on the delivery you require or the features you have added to the basic structure.

Tier I

These buildings can be delivered in as little as six weeks, with limitations in design. Classic Tier I comes in multiple slopes, widths, and heights with two different wall panels with various color options. You may also choose an array of accessories to make your building more functional and attractive.

Tier II

When your building requires more design flexibility, Classic Tier II gives you a range of options to meet your needs. For example, you can add rooftop units, partitions, or insulated metal panels (IMPs) to your building to meet your specific requirements.



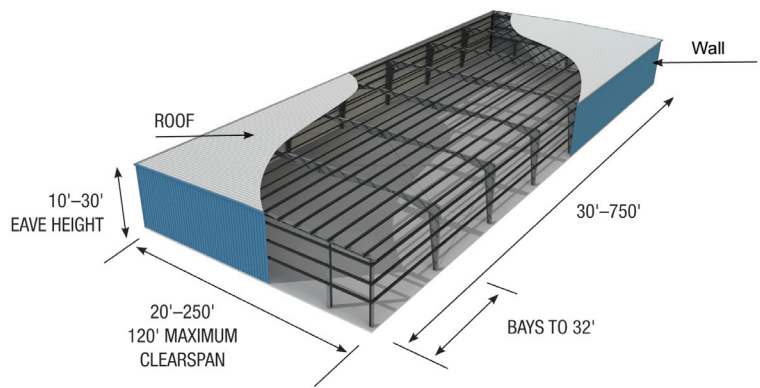
Butler Classic™ Buildings



Tier I Classic™ Building System

Parameters

- 1/4:12 to 4:12 roof slope
- Straight or tapered columns
- Rod, portal frames, or diaphragm bracing options
- Energy-efficient Butlerib II EX™ and Shadowall EX™ wall systems in standard colors and gages
- Butlerib® II or MR-24® roof panels in standard colors and gages
- Butlerib® II or Shadowall™ wall panels in standard colors and gages
- At or below eave canopies
- Standard trims and accessories available



Tier II Classic™ Building System

Parameters

- Straight or tapered columns
- Eave heights 10'- 30' with high eave, single-slope: 35' maximum
- Multiple units allowed at or below eave
- At or below eave canopies at end walls
- Wind loaded partitions with skirt walls
- Rod, portal frames, or diaphragm bracing options
- Available stand-alone Express Mezz with integrated stairs & railings
- Energy-efficient Butlerib II EX™ and Shadowall EX™ wall systems in standard colors and gages
- Butlerib® II or MR-24® roof panels in standard colors and gages
- Butlerib® II, or Shadowall™ wall panels in standard colors and gauges
- TextureWall™ and Butler Thermawall insulated wall panels in standard colors and gauges
- Allows Butler Lite*Panl® translucent roof and wall panels
- Traditional wainscot to 8'
- Standard trims and accessories available





Classic™ Wall Systems



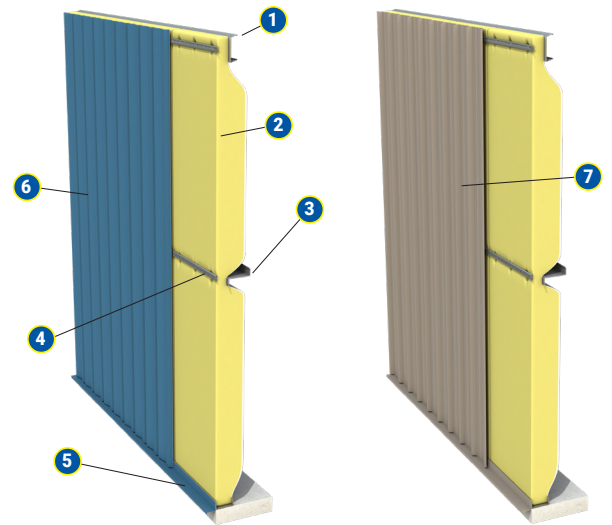
Wall Systems for Tier I and Tier II

Butlerib II EX™ and Shadowall EX™ Wall Systems

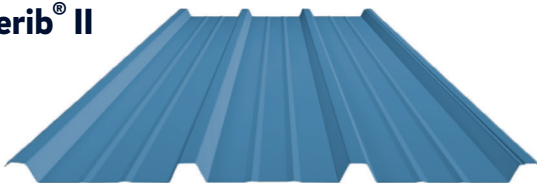
Available in two distinctive panel profiles, the Butler® EX Wall Systems deliver exceptional energy performance while also providing an architecturally pleasing exterior. The systems address the demands of new energy codes while offering a cost competitive option to insulated metal panels (IMPs).

- Tested assemblies can reach a U-factor up to .046
- Energy performance exceeds a 2.5" IMP
- Easy to install

1. Eave Strut	5. Base Trim
2. Insulation	6. Shadowall™ Panel
3. Girt	7. Butlerib® II Panel
4. Stanchion	

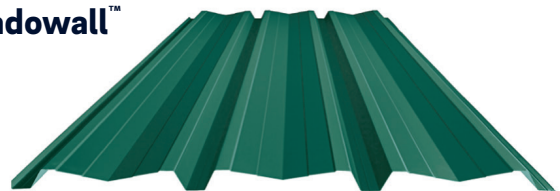


Butlerib® II



- 3' wide panel
- Corrugations 12" on center
- 1-1/2" high corrugation

Shadowall™



- 3' wide panel
- Corrugations 12" on center
- 1-7/16" high corrugation

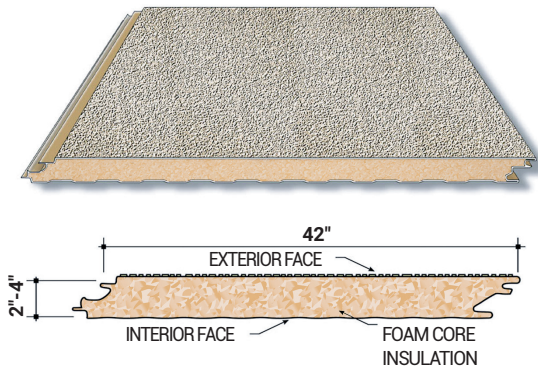
Classic™ Wall Systems

Wall Systems for Tier II

TextureWall™

TextureWall™ panels have an exterior textured surface that creates a stunning stucco appearance.

- 42" wide panel
- 2-4" thickness
- Concealed fastener

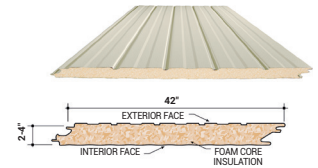


Thermawall™

The Thermawall™ wall system is a factory-fabricated composite insulated metal wall panel with concealed fasteners for a clean, attractive appearance

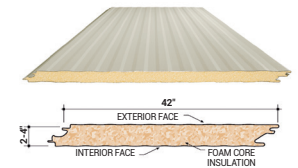
Fluted

- 42" wide panel
- 2-4" thickness
- Fluted (deep) corrugations



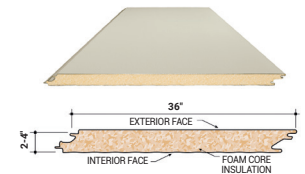
Fineline

- 42" wide panel
- 2-4" thickness
- Fineline (shallow) corrugations



Flat

- 36" wide panel
- 2-4" thickness
- Smooth, embossed surface



	Butler® II	Shadowall™	TextureWall	Butler Thermawall™ Flat	Butler Thermawall™ Fluted	Butler Thermawall™ Fineline
APPLICATIONS	Agricultural, Commercial, Industrial	Agricultural, Commercial, Industrial	Agricultural, Commercial, Industrial	Agricultural, Commercial, Industrial	Agricultural, Commercial, Industrial	Agricultural, Commercial, Industrial
PANEL COVERAGE	36"	36"	42"	36"	42"	42"
RIB HEIGHT	1-1/2"	1-7/16"	2", 2-1/2", 3" & 4"	2", 2-1/2", 3" & 4"	2", 2-1/2", 3" & 4"	2", 2-1/2", 3" & 4"
MATERIAL	26-gauge or 24-gauge	26-gauge or 24-gauge	24 G Ext 26 G Int	22 G Ext 26 G Int	26 G Ext 26 G Int	26 G Ext 26 G Int
FASTENING SYSTEM	Exposed	Semi-concealed	Concealed	Concealed	Concealed	Concealed
FINISHES	Kynar® 500	Kynar® 500	Texture-Cote™ finish system	Kynar® 500	Kynar® 500	Kynar® 500



Classic™ Wall Systems



KingSpan® Wall Systems for Tier II

KS Granitstone®



- Granitstone panels arrive to site ready for quick and easy installation
- Thicknesses range from 2"-4" for superior thermal performance
- Outside corner and U-shaped panels can be factory formed

KS Shadowline



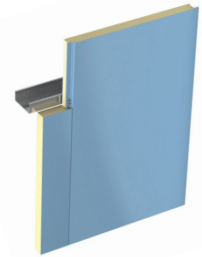
- Designed to meet today's high performance standards in a wide variety of environments
- Available in 26, 24 and 22 gauge to meet most design and span requirements
- KS Shadowline's tongue and groove interlocking rainscreen joint provides supreme foam-to-foam contact and thermal protection

KS Mini Micro-Rib



- Fully engineered joint design allows for profile integration, creating a striking appearance
- Thicknesses range from 2"-4" to meet specified thermal performance

Optimo®



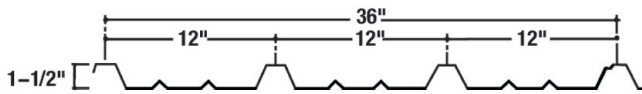
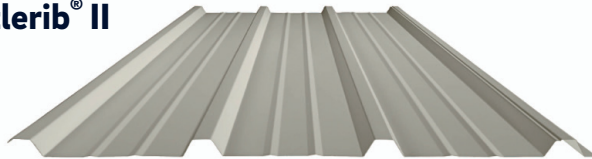
- Ideal for new and retrofit applications across all market sectors
- Exterior profile can be embossed or non-embossed to meet specification needs
- Patented double seal integrated joint
- Module widths include 36" to meet design requirements

	KS Granitstone®	KS Shadowline	KS Mini Micro-Rib	Optimo®
APPLICATIONS	Agricultural, Commercial, Industrial	Agricultural, Commercial, Industrial	Agricultural, Commercial, Industrial	Agricultural, Commercial, Industrial
WIDTH	42"	42"	42"	42"
THICKNESS	2" - 4"	2" - 4"	2" - 4"	2" - 4"
MATERIAL	24 G Ext 26 G Int	26 G Ext 26 G Int	24 G Ext 26 G Int	22 G Ext 26 G Int

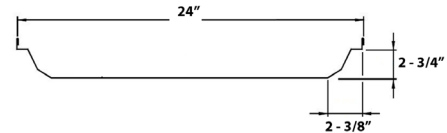
Classic™ Roof Systems

Roof Systems for Tier I and Tier II

Butlerib® II



MR-24®

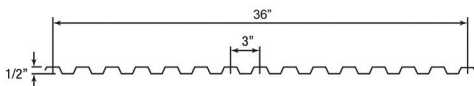
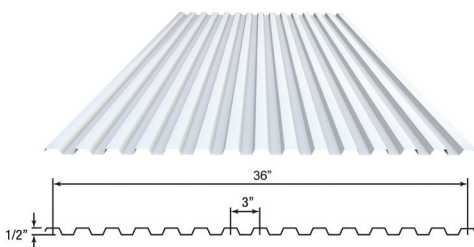


	Butlerib® II	MR-24®
APPLICATIONS	Agricultural, Commercial, Industrial	Commercial, Industrial
SLOPE	Minimum 1/2:12	Minimum : 1/4:12, Maximum 4:12
SUBSTRUCTURE	Open framing or solid substrate	Open framing or solid substrate
PANEL COVERAGE	36"	24"
RIB HEIGHT	1-1/2"	2-3/4"
MATERIAL	26-gauge or 24-gauge	24-gauge
FINISH	Galvalume® or Kynar® 500 finish	Galvalume® or Kynar® 500 finish

Liner Panels for Tier I and Tier II

Liner Panel

Available in either Butlerib® II or MOD-36 in an 8' standard length, or up to full wall height, with an unpainted Galvalume® or Butler-Cote™ finish. (Interior white color standard for MOD-36)



MOD-36 Liner Panel

	MOD-36 Liner
APPLICATIONS	Interior wall liner
PANEL COVERAGE	36"
PROFILE DEPTH	1/2"
MATERIAL	28-gauge solid steel
FASTENING SYSTEM	Exposed
FINISH	Interior white

Experience the Butler Difference.

Butler Builders—offering single-source responsibility and complete construction services. Find your local Butler Builder® at www.butlermfg.com.

High-performance products—such as acrylic-coated galvanized C/Z purlins and girts, and structural and wall systems that integrate easily with all building materials.

Butler-Cote™ finish—only Butler offers this superior full-strength Kynar 500® or Hylar 5000® Fluoropolymer finish system as the standard exterior finish on all painted panels and trim.



Butler Manufacturing
Kansas City, MO
816-968-3000

www.butlermfg.com

Butler® building products are constantly being improved; therefore, the information contained herein is subject to change without notice. Before finalizing project details, contact your nearest Butler Builder® or Butler Manufacturing™ for the latest information. Kynar 500® is a registered trademark of Arkema. Hylar 5000® is a registered trademark of Solvay Solexis. The USGBC logo is a registered trademark owned by the U.S. Green Building Council and is used by permission. © 2021 BlueScope Buildings North America, Inc. All rights reserved. Butler Manufacturing™ is a division of BlueScope Buildings North America, Inc. Find your independent Butler Builder at www.butlermfg.com. Form No. 6598 7/21

