

# Phoenix Copper Leach Project– Tank Farm Building 2013



Architectural Finishes for Fire Rating the Organic Tank Room.

**Ormaza Construction Sub Contractor for The Industrial Company (TIC) Phoenix Copper Leach Project**

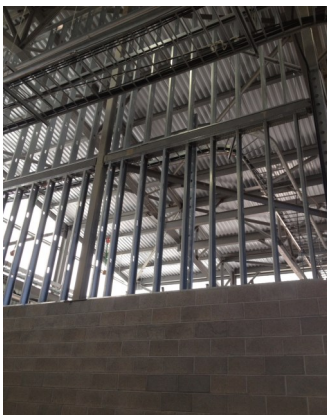
Project Location: Phoenix Newmont Mine, Battle Mtn, NV  
Project Size: Approx. 2,720 S.F. Fire Rated Partition Wall  
Project Duration: 4 weeks

## PROJECT DETAILS

- Heavy Gage Steel Stud Framing
- Drywall
- Fire Tape and Finish
- Paint
- Fire Proofing
- Doors and Hardware



Phoenix Copper Leach Project—Newmont Mine Corp. Battle Mtn. NV



The Newmont Phoenix Copper Leach Project is a high grade Copper deposit located in Lander County. This project consisted of the surface facilities and infrastructures that support the mining operations. The Organic Room Consisted of 24' high steel stud and sheetrock walls framed on top of approximately 62 feet of CMU wall. Ormaza Construction worked as a Sub Contractor to TIC on this project. The walls were framed with heavy gage steel studs, 5/8" drywall, fire taped, and painted. All penetrations were sealed with Rockwool and Fire Caulk.